

PlexService 1.6 Installation Guide

THE SOFTWARE PLATFORM PROVIDER



Table of Contents

1	Introduction	3
2	System Requirements.....	4
2.1	Hardware.....	4
2.2	Software	4
3	Installation	5
3.1	Installation Preparation.....	5
3.2	Installation Process	6
3.2.1	Custom Installation	12
3.2.2	Ready To Install.....	15
3.2.3	InstallShield Wizard Completed.....	16
4	Uninstall	17
5	Glossary	23

1 Introduction

The PlexService 1.6 Setup wizard automatically installs the PlexService software and its Administration Tool onto your computer. The Setup wizard creates five sets of folders. The first four sets are PlexService (PlexService programs and their documentation), Administration Tool (PlexServer Administration Tool MMC Snap-in program and its documentation), HomeDir (PlexServer initial xml configuration files), and IIS (PlexServer SDL files, WSDL files, and empty resource folder). These folders are located in the K-Plex folder under the Program Files folder as default. The last set is an MSSoap (Microsoft Soap 2.0 Toolkit) folder in the Microsoft Common files. The default location is in the “c:\Program Files\Common Files”.

The Setup wizard decompresses files from the PlexService release media and copies them to these folders onto your hard disk. In addition, it registers PlexService dlls, creates program icon shortcuts in the Windows Start Menu\Programs folder, generates SDL/WSDL/xml configuration file, and creates the PlexServer Repository database call PlexService in the local SQL Server. Here are the program icon shortcuts that it will create:

Program-Item Icons

- Administration Tool
- Administration Tool User Guide
- PlexService User Guide
- Read Me
- Transform CSV Guide
- Transform XHTML Guide

Windows is a registered trademark of Microsoft Corporation in the United States and other countries.

PlexWare, PlexService, PlexKlip and Klip are trademarks under registration of K-Plex Inc.

2 System Requirements

PlexService, its Administration Tool, and the installation software require the following minimum hardware and software in order for them to work properly:

2.1 Hardware

- 400 MHz Pentium II.
- 256 MB RAM.
- 50 MB free disk space.
- TCP/IP Network connection with Internet access.
- VGA display and adapter.

2.2 Software

- Windows 2000 Server with Service Pack 1 or later.
- IIS 5.0.
- MMC 1.2.
- Active Directory Server Connection.
- OLEDB connection to SQL 2000 Server.
- OLEDB connection to Oracle (Optional).
- OLEDB connection to DB2 (Optional).
- SQL 2000 Server (Optional for storing repository database locally).

In order to use SQL 2000 Server as connection database of PlexService, the authentication of SQL 2000 Server must be "SQL Server and Windows (Mixed Mode).

3 Installation

K-Plex distributes the InstallShield Setup wizard to automate the installation process of the PlexService software and its Administration Tool. In order to have a smooth installation process, there are a few preparation steps to be done before running the setup.

3.1 Installation Preparation

PlexService is integrated with Microsoft Active Directory for user authentication. Therefore, in the installation process, it will prompt for the LDAP URL and network logon account and password. It also has its own repository database. This database will store log information (Log DB), PlexWare remote desktop for each PlexWare user (Klip DB), Klip resource (KlipResource DB), and Multi-point Collaboration application data (Collaboration DB). Therefore, it will prompt for database account information. Here is the list of installation preparation:

Installation Preparation List:

- A domain name, domain user name and password. This account should be a member of the local administrator group.
- LDAP URL.
- SQL 2000 Server Name (if it is a remote database server).
- Database user name and password. This database account should have the permission to create, retrieve, and update database.

What is LDAP URL ?

LDAP URL is the name to indicate actual Active Directory. If domain name is “dev.kplex.com”, LDAP URL will be “LDAP://dev.kplex.com”. PlexService V1.6 supports WinNT Context, also. If users don't use Active Directory, users can specify WinNT Context instead of LDAP URL. If users specify WinNT Context, the accounts that are defined in the local machine will be available on PlexService. If machine name is “PLEXSERVICE”, actual WinNT Context value will be “WinNT://PLEXSERVICE”. If users specify WinNT Context, users must specify machine name as domain name.

When using Klip Resource Database:

When users use Klip Resource Database and Resource Object must be uploaded to IIS , Resource directory must be writable. User can set using this installer or Internet Information Services application.

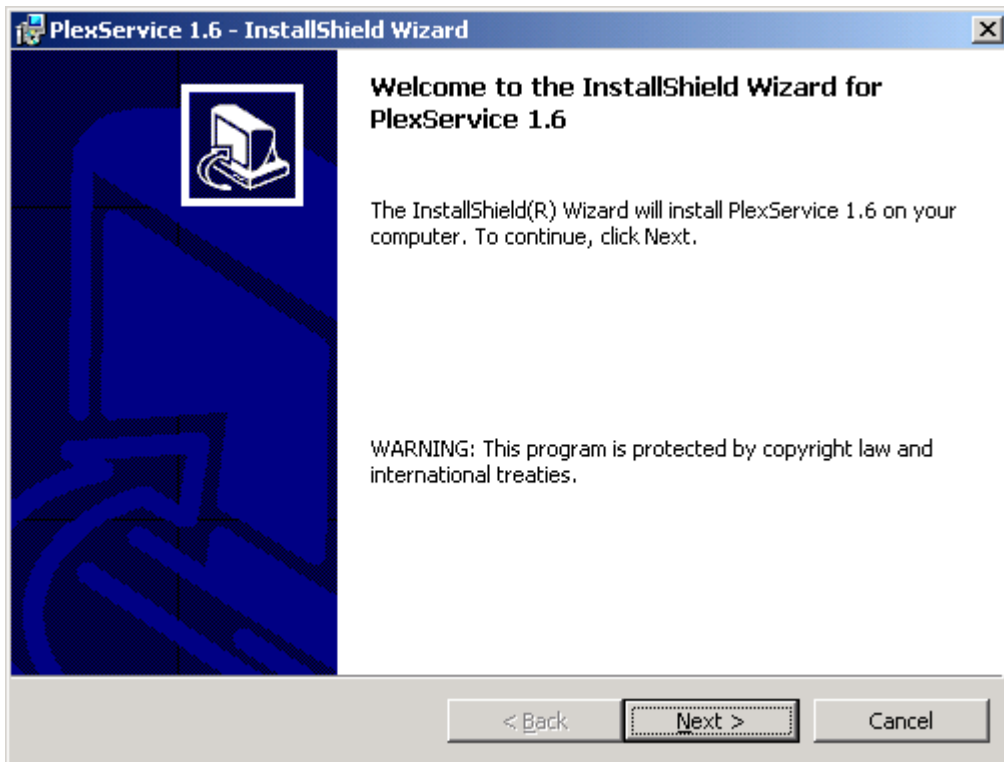
3.2 Installation Process

Once the preparation information is on hand, the installation process should be straightforward. Here are the instructions for installing PlexService software:

To Install PlexService and its Administration Tool:

- Run the **Setup.exe** from the PlexService release media (CD-ROM).
- When the **Welcome** window appears, click on the **Next** button.

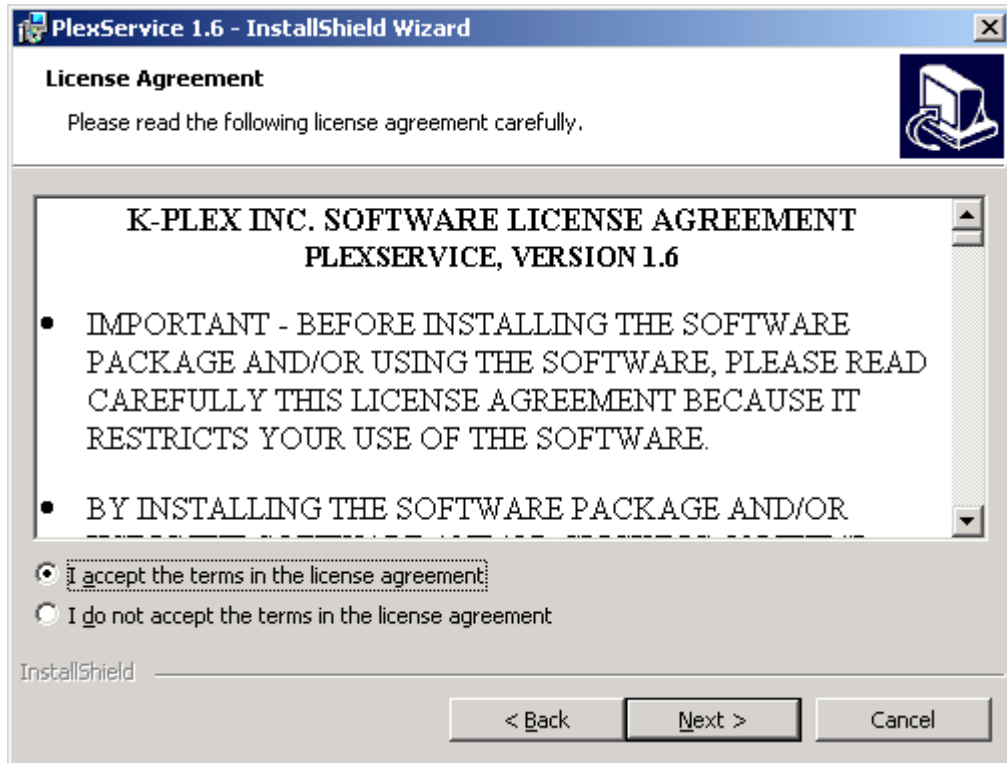
Welcome Window



PlexServiceV1.6 Installation Guide

- Read the **License Agreement**.
- If you are agree with the terms and conditions, select **I accept the terms in the license agreement**. Otherwise, select **I do not accept the terms in the license agreement**.

License Agreement Window

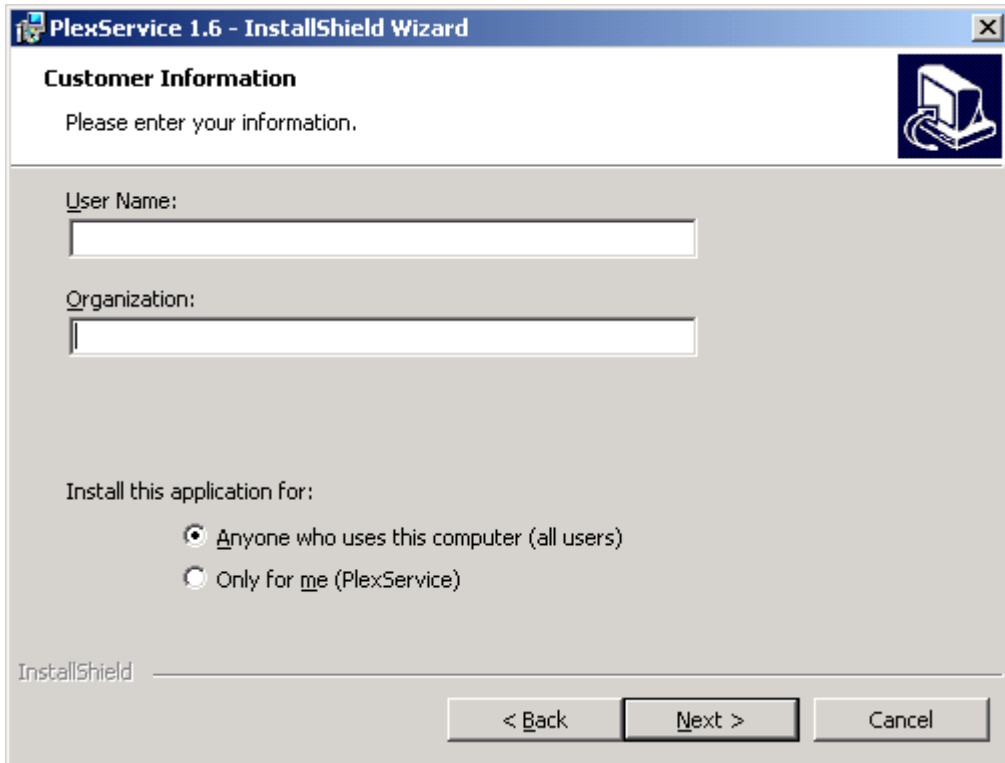


- Click on the **Next** button to continue or to exit the installation.

PlexServiceV1.6 Installation Guide

- Enter the **User Name** and **Organization** in the **Customer Information** window.
- If this installation is only for you, select **Only for me** in the **Install this application for** option or select **Anyone who uses this computer for (all users)**.

Customer Information Window



The screenshot shows a window titled "PlexService 1.6 - InstallShield Wizard". The window has a blue title bar and a close button in the top right corner. The main content area is titled "Customer Information" and contains the text "Please enter your information." followed by two text input fields: "User Name:" and "Organization:". Below these fields is a section titled "Install this application for:" with two radio button options: "Anyone who uses this computer (all users)" (which is selected) and "Only for me (PlexService)". At the bottom of the window, there is a "Back" button, a "Next >" button, and a "Cancel" button. The "InstallShield" logo is visible in the bottom left corner of the window.

- Click on the **Next** button to continue.

PlexServiceV1.6 Installation Guide

- Enter the **LDAP URL**, **Domain Name**, **Logon Account**, and **Password** (from the preparation steps earlier) in the **Network Information** window.
- If RootContext value is same as LDAP URL, select **Set RootContext with LDAP URL value**.
- If Resource Directory must be writable in order to using Uploading feature, select **Make Resource Directory WRITABLE**.

Network Information Window

PlexService 1.6 - InstallShield Wizard

Network Information

Please enter the LDAP url, network domain name, logon account, and its password. This logon account should also be a member of the local administrator group. PlexServer will use this account to authenticare its user with LDAP server.

LDAP URL:
LDAP://dev.kplex.com

Domain:
dev.kplex.com

User Name:
Administrator

Password:

Set RootContext with LDAP URL value.

Make Resource Directory WRITABLE.

InstallShield

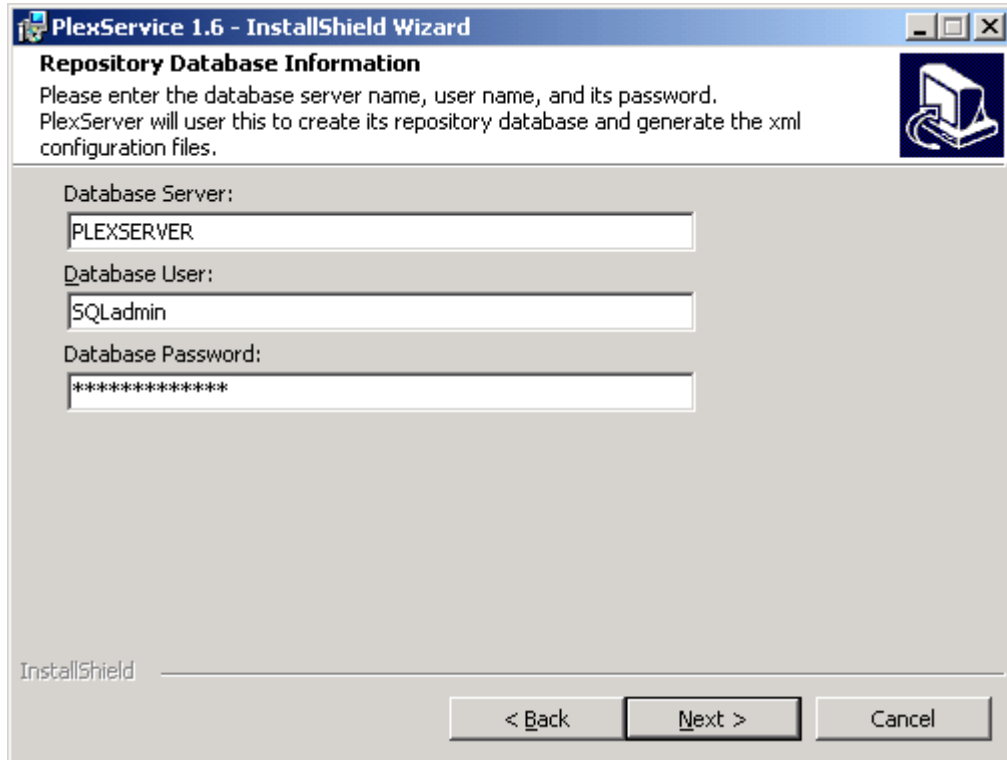
< Back Next > Cancel

- Click on the **Next** button to continue.

PlexServiceV1.6 Installation Guide

- Enter the Database **Server Name**, **Database User**, and the **Database Password** (from the preparation steps earlier) in the **Repository Database Information** window.

Repository Database Information Window



PlexService 1.6 - InstallShield Wizard

Repository Database Information

Please enter the database server name, user name, and its password.
PlexServer will use this to create its repository database and generate the xml configuration files.

Database Server:
PLEXSERVER

Database User:
SQLAdmin

Database Password:

InstallShield

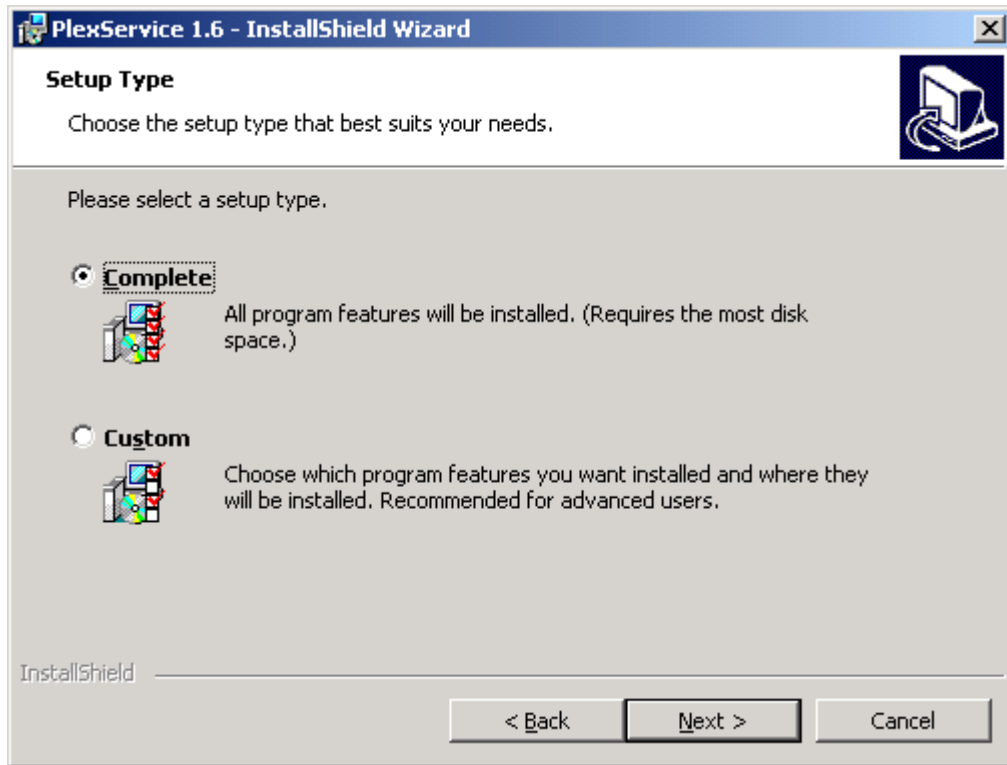
< Back Next > Cancel

- Click on the **Next** button to continue.

PlexServiceV1.6 Installation Guide

- Select the setup type in the **Setup Type** window and click on the **Next** button.

Setup Type Window



- For complete installation, skip the Custom Installation and go to the Ready to Install section.

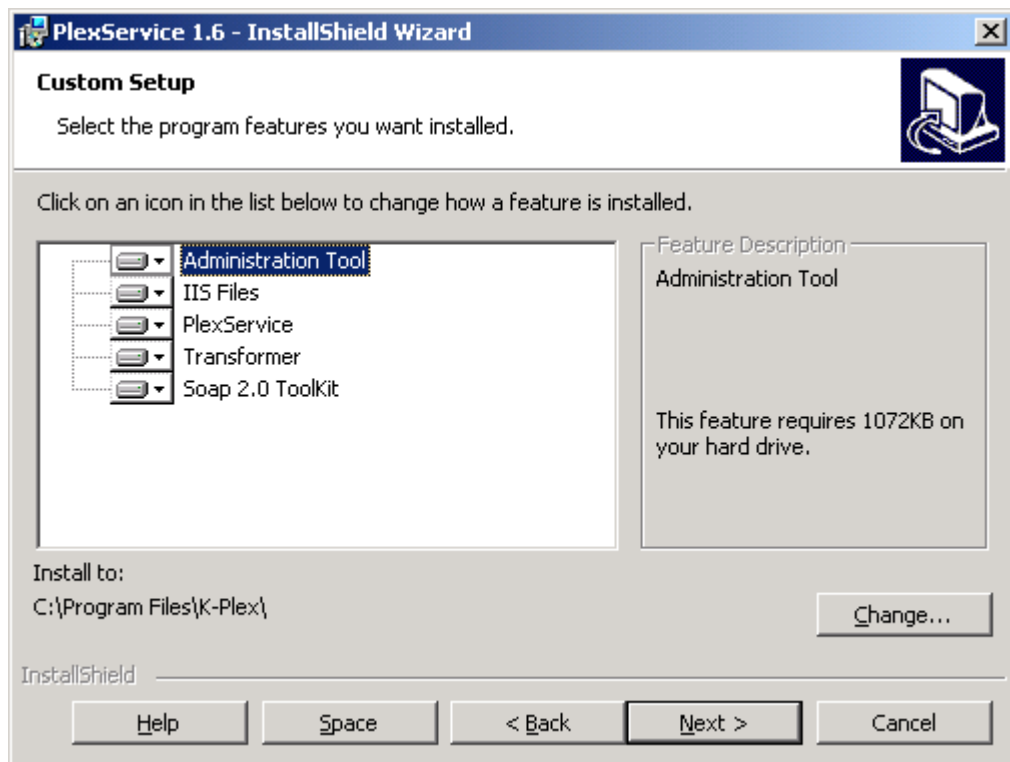
3.2.1 Custom Installation

Custom Installation gives you the option to remove the Administration Tool, Transformers, and Soap 2.0 Toolkit component. It also has an option to change the destination folder.

To remove a component:

- Click on the down arrow on the left of the component to get a drop down option list.
- Select **This feature will not be available** option from the drop down option list.
- Repeat this process to remove an additional component.

Custom Setup Window



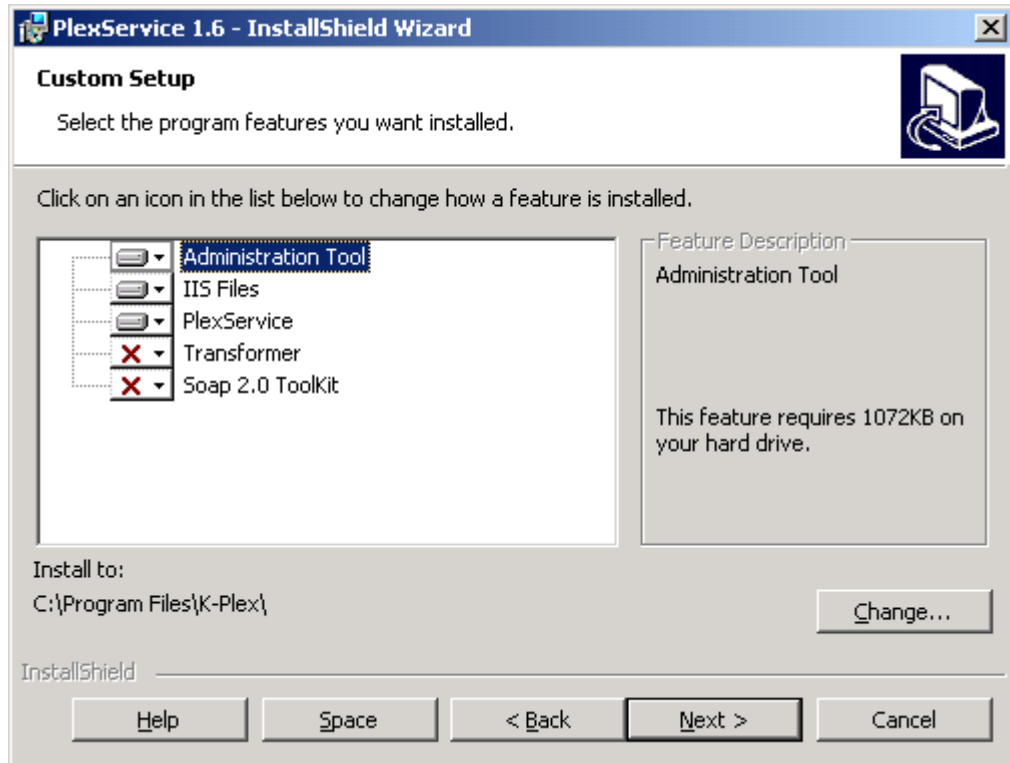
- Click on the **Next** button to skip to the **Ready to Install the Program** window or continue for option to change the destination folder.

PlexServiceV1.6 Installation Guide

To change the destination folder:

- Select the required feature and click on the **Change** button for the **Change Current Destination Folder** window.

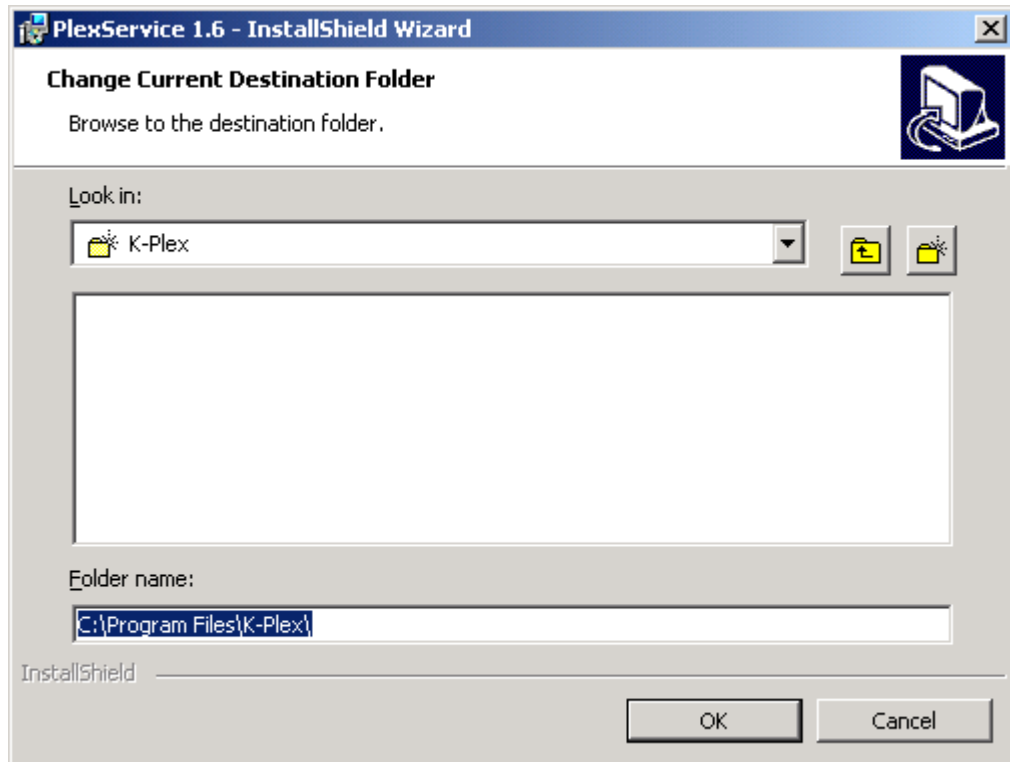
Custom Setup Window



PlexServiceV1.6 Installation Guide

- Select the new destination folder.
- Click on the **OK** button to go back to the **Custom Setup** window.

Change Current Destination Folder Window

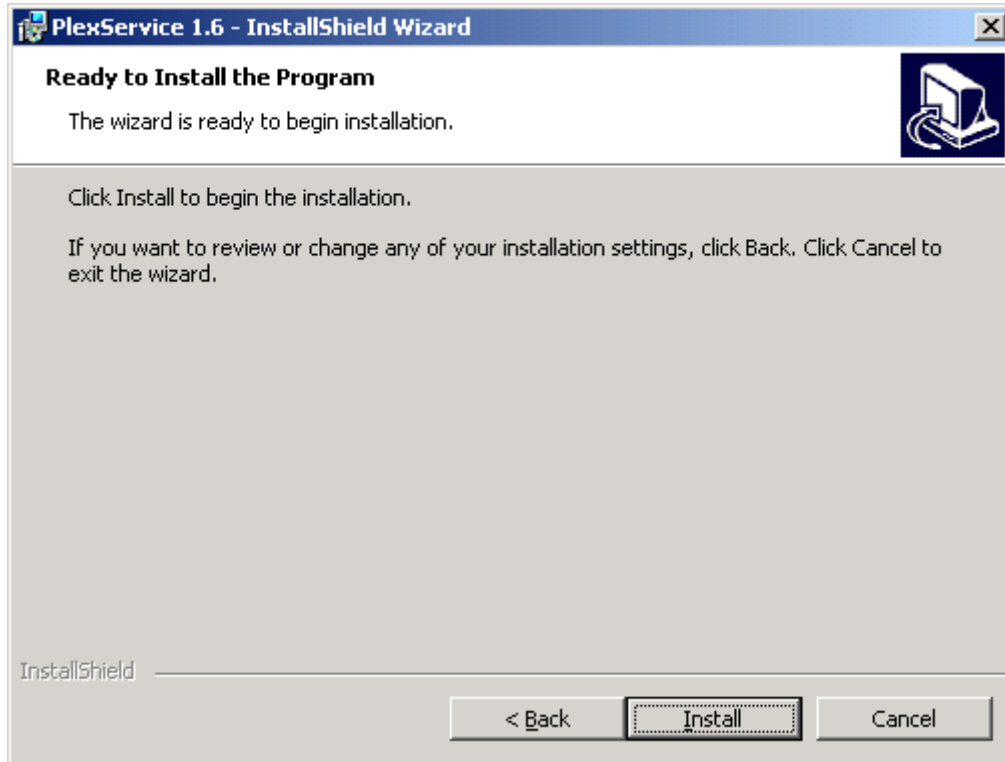


- Click on the **Next** button in the **Custom Setup** window to continue.

3.2.2 Ready To Install

- Click on the **Install** button in the **Ready to Install the Program** window to begin the installation.

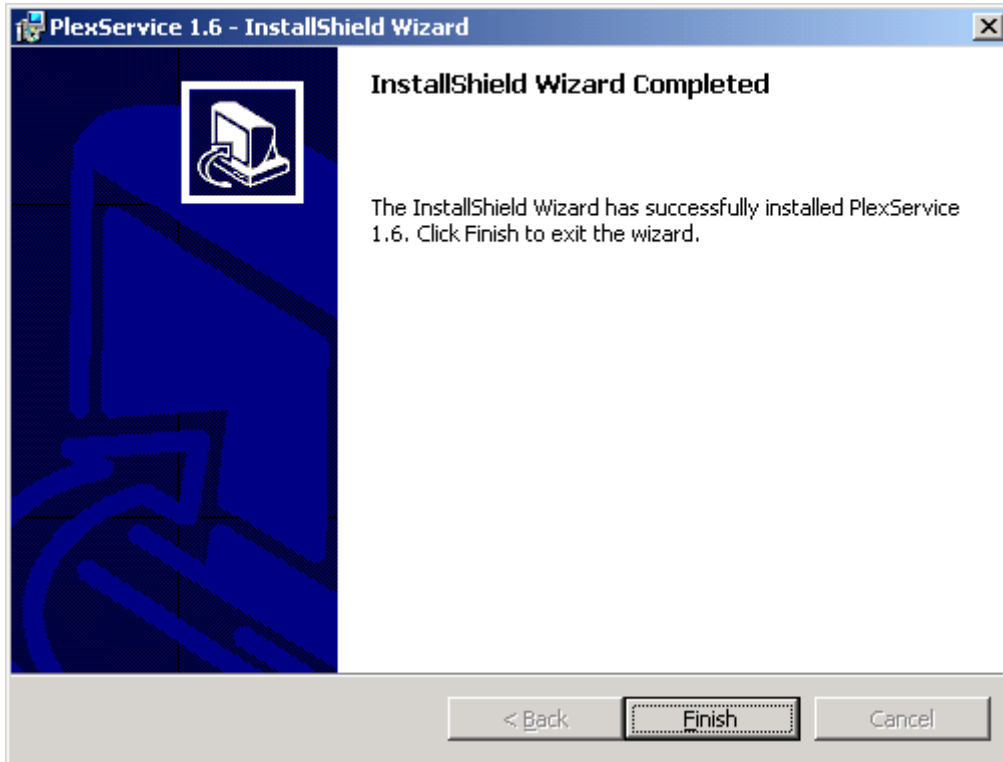
Ready to Install the Program Window



3.2.3 InstallShield Wizard Completed

- When Setup has finished installing PlexService, it displays the **InstallShield Wizard Completed** window. Click on the **Finish** button to finish the installation.

InstallShield Wizard Completed Window



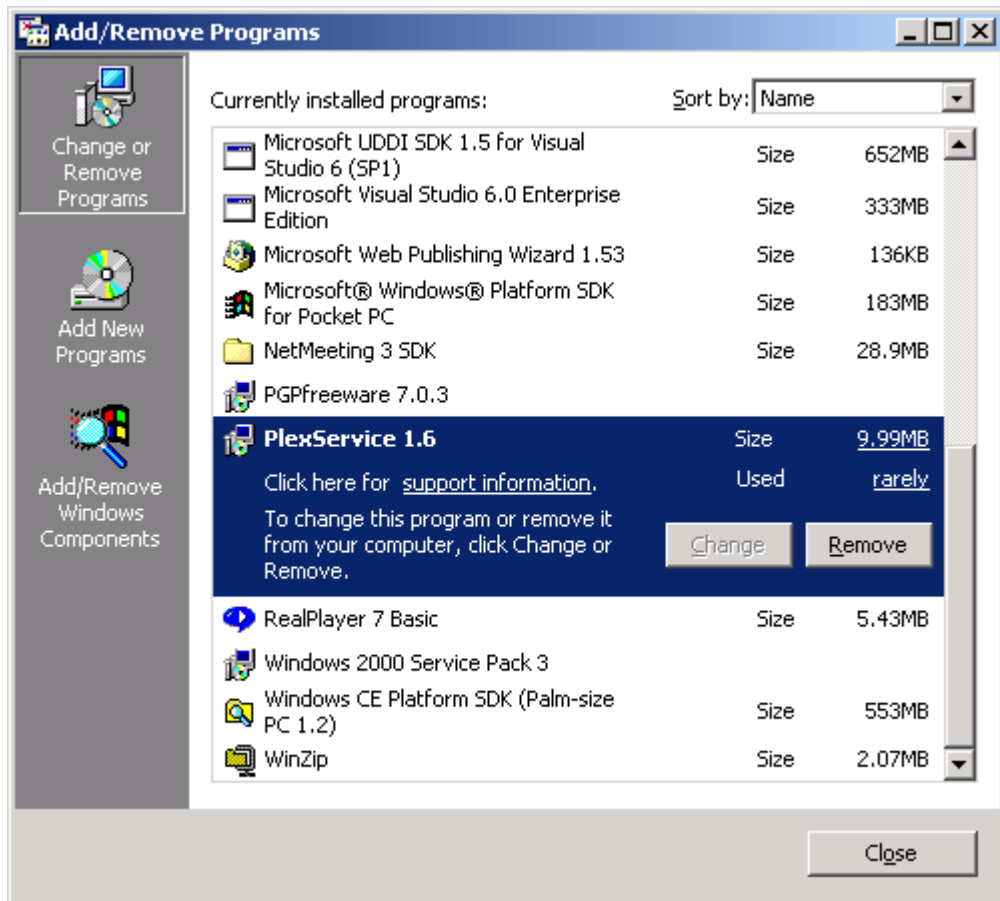
4 Uninstall

The PlexService uninstall process is integrated into Windows Add/Remove Programs and setup program. The Windows Add/Remove Programs will remove all the installed files and folder except for the IIS folder because it can't remove the IIS virtual directory created by the installation process. The recommended way is to use the setup.exe program again for completed removal of all installed folder. Here are the instructions to uninstall PlexService using Add/Remove Program:

To Uninstall PlexService using Add/Remove Program:

- Click at the Start button on the Taskbar to bring up the Start Menu.
- Select the Settings\Control Panel to bring up the Control Panel window.
- Double click at the Add/Remove Programs icon to get the Add/Remove Programs window below.

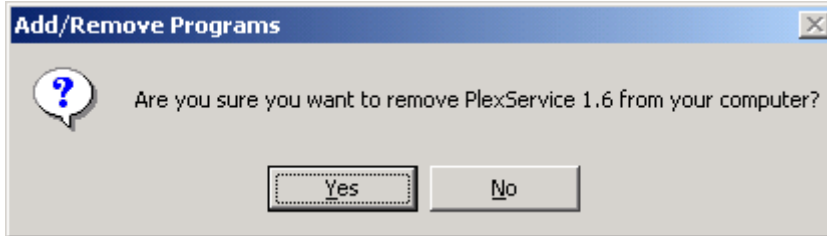
Add/Remove Programs with PlexService 1.6 Selected.



PlexServiceV1.6 Installation Guide

- Select the PlexService and click the Change/Remove button to uninstall it.
- Click the Yes button in the Confirm File Deletion Dialog.

Confirm File Deletion Dialog.

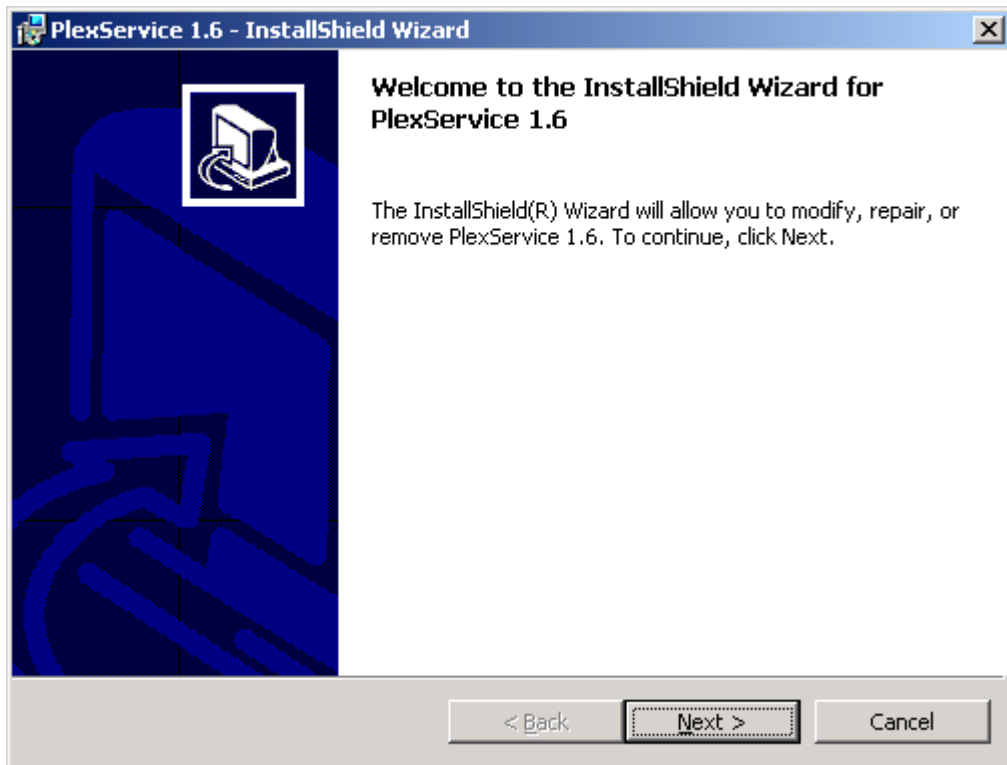


PlexServiceV1.6 Installation Guide

To Uninstall PlexService using Setup.exe Program:

- Run the Setup program again.
- Click at the Next button in the Welcome window for the Program Maintenance window.

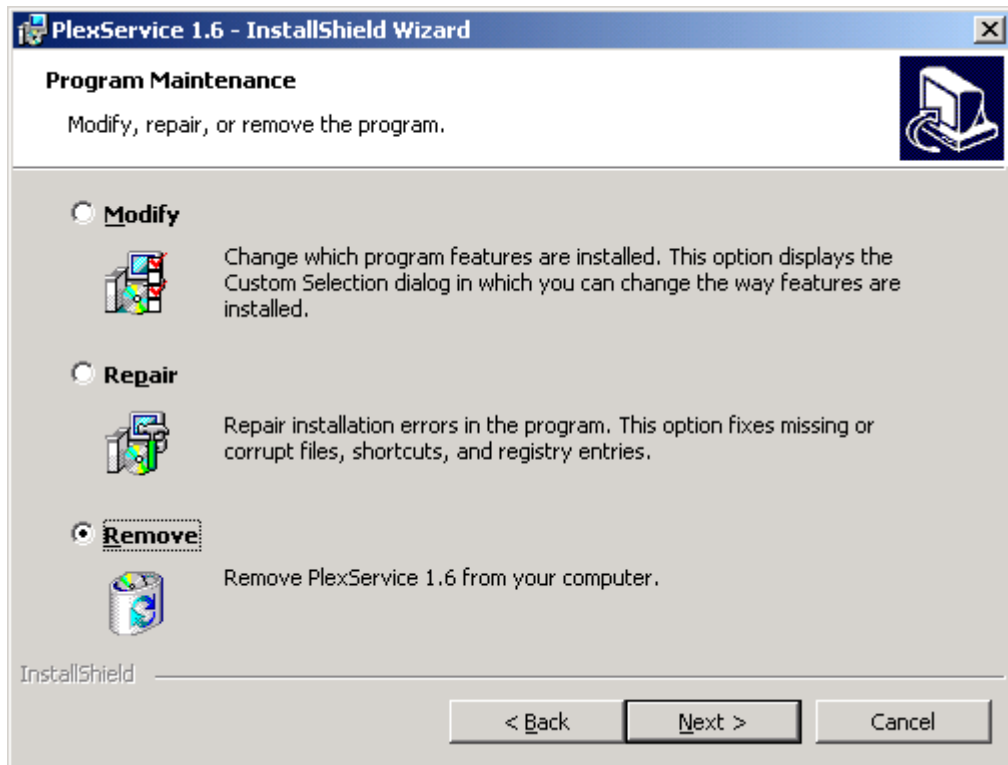
Welcome Window



PlexServiceV1.6 Installation Guide

- Select the Remove option in the Program Maintenance window.
- Click at the Next button in the Program Maintenance window for the Remove the Program window.

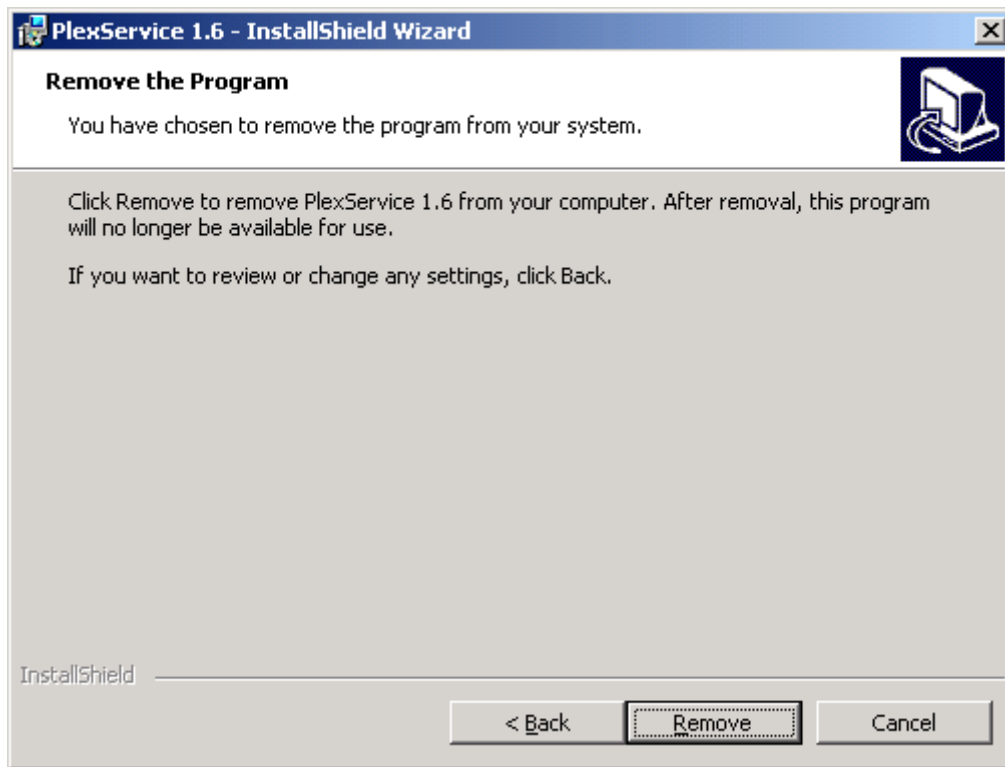
Program Maintenance Window



PlexServiceV1.6 Installation Guide

- Click at the Remove button in the Remove the Program window.

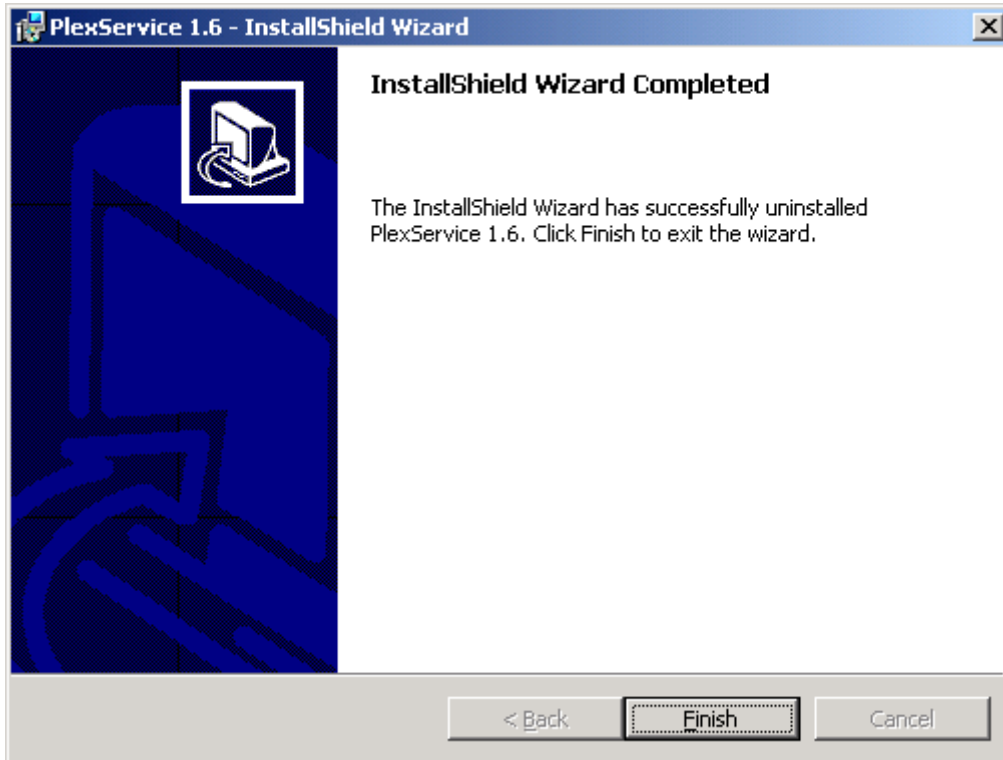
Remove the Program Window



PlexServiceV1.6 Installation Guide

- When it is finished remove the program, it displays the InstallShield Wizard Completed window.
- Click at the Finish button in the InstallShield Wizard Completed window to close it.

InstallShield Wizard Completed Window



5 Glossary

➤ **PlexWare**

PlexWare is a KPlex front-end XML-based software product that enables the drag and drop, data sharing, collaboration, and enterprise integration and unification functionality to the Internet browser.

➤ **PlexService**

PlexService is a KPlex back-end server software product that provides XML-based service to PlexWare software.

➤ **PlexServer**

PlexServer is a computer running the PlexService software to provide the service to PlexService client.